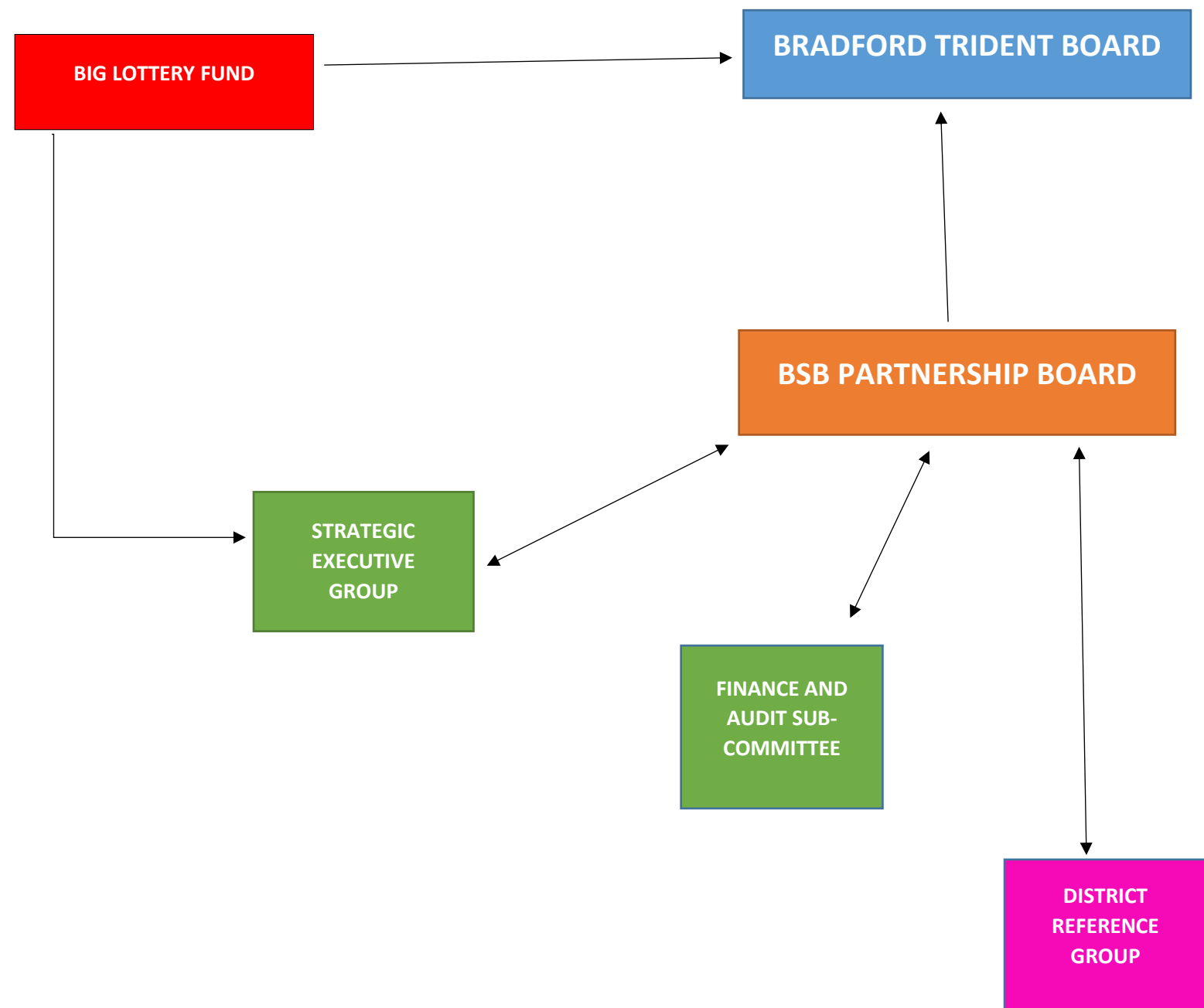


BETTER START BRADFORD GOVERNANCE STRUCTURE



BSB Partnership Board membership:

Michael Jameson	Strategic Director of Children’s Services, BMDC
Sarah Hinton	Board Representative, Bradford Trident
Dr Anita Parkin	Director of Public Health, BMDC
Dr Rosie McEachan	Programme Director, Born in Bradford
Julia Elliot	Interim Head of Children's Services, Bradford District Care Foundation Trust
Rashida Latif	Community representative and Health Lead, East Bradford Children’s Centres
Christy Bischoff	Community representative and Coordinator for Bradford Action for Refugees
Ruth Hayward	Head of Commissioning (Women and Children) Bradford City District Clinical Commissioning Groups
Anna Boocock	Community Representative and Volunteer at BD4 family and local church
Janette Reynolds	General Manager, Women's and Children Services Bradford Teaching Hospital Foundation Trust
Mel Astin	Community representative and BD4 Family Project Manager
Gweneth Balson	Community Representative and Chair of Womenzone
Indi Elcock	Community representative and Anchor Project Coordinator
Scott Bisset	Chief Superintendent West Yorkshire Police
Nahed Akhtar	Community Representative and parent
Talat Sajawal	Ward Councillor
Peter Horner	Volunteer Community Sector Representative, Bradford District Assembly
Mumtaz Elahi	Community representative and Family Outreach Worker Westminster CE Primary School
Nasreen Khan	Community representative and Trident Community Councillor
Nasim Qureshi	Community representative and CEO Inspired Neighbourhoods
Vipin Joshi	Community representative and Bradford Trident Board member